



PRO REEL SERIES

MED-15-CAT6

15' (4.6 m) Retractable CAT6 Shielded Cable Reel
with Antimicrobial Housing

Efficient cable management solution for professional environments.

The Stage Ninja® MED-15-CAT6 features 15 feet (4.6 meters) of premium CAT6 shielded cable with RJ45 connectors. The durable high-impact plastic housing is molded with a permanent antimicrobial additive, making it ideal for sterile, mobile applications. The retractable cable locks at any length and retracts smoothly with a pull-to-lock, pull-to-release mechanism. A 3-foot (0.91 meters) static lead is included, and the unit comes standard with a flat mounting strap for horizontal surfaces. Optional vertical mounting bracket kits are available.

Key Features


Durable High-impact plastic housing molded with permanent antimicrobial additive

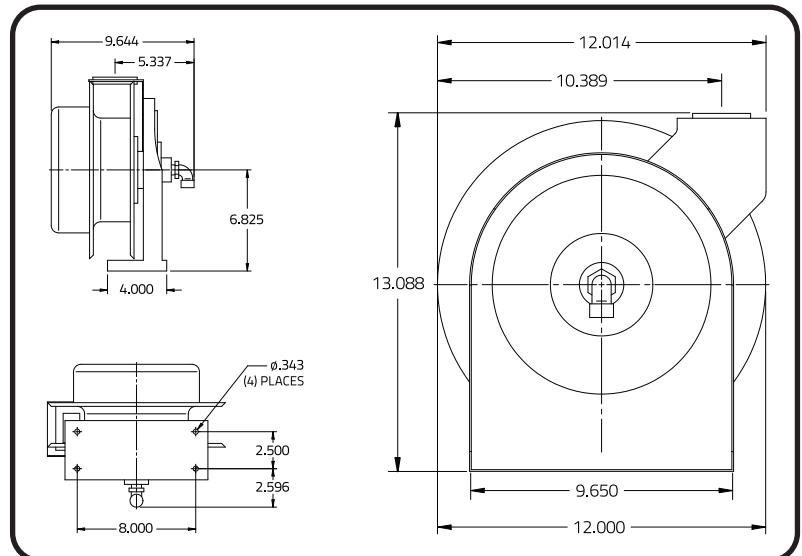
Retractable Locks at any length; smooth retraction with pull-to-lock, pull-to-release mechanism

Reliable Premium CAT6 shielded cable with RJ45 connectors

Flexible 15' retractable end; 3' static lead

Serviceable Optional vertical mounting bracket kits available (VMB-7-S and VMB-7-SVL)

Custom options available to meet specific requirements. Call 317-829-1507 to learn more. **Made in the USA.** 



Reel Material	High-impact plastic with permanent antimicrobial additive
Retraction Length	15 ft (4.6 m)
Static Length	3 ft (0.91 m)
Connectors	RJ45 (male)
Cable Type	Premium CAT6 shielded
Reel Dimensions	Diameter: 7.5" (19.05 cm); Thickness: 2.85" (7.24 cm)
Mounting	Flat mounting strap included; optional vertical mounting bracket kits (VMB-7-S and VMB-7-SVL)
Lock & Release	Pull-to-lock, pull-to-release mechanism
Weight	Approximately 3 lbs (1.36 kg)
Warranty	1-year limited warranty



Visit Stage Ninja



E-Mail Support



Terms & Conditions



Warnings

WARNING Read all instructions before use. This product can cause injury, including but not limited to burns, cuts, eye injuries, or amputation if the cord is misused or damaged. Recoil may cause injuries, especially when reconnecting. When unplugging, hold the cable end to maintain control. Avoid wrapping the cord around any appendage or body part. Wear long pants and protective gear to minimize the risk of burns or cuts from the retractable cord. The retractable cord is intended for use by responsible adults only. Keep out of reach of children. Do not allow anyone to touch or come into contact with the reel while in use. Stop using the retractable cable if it shows any signs of wear, damage, or does not function properly. Do not place hands, feet, head, or any other body part near the housing while the cord is extended. Please heed these warnings and exercise caution when using the retractable cable.